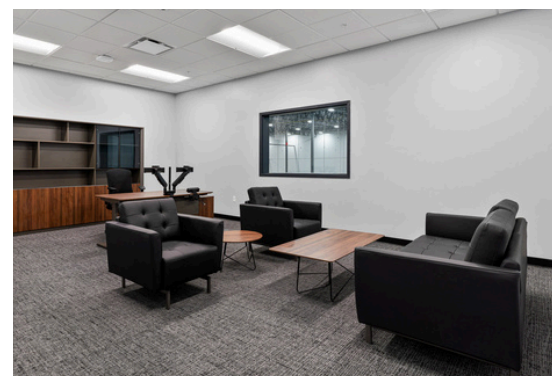
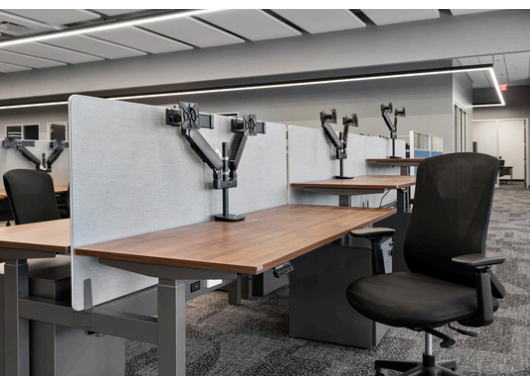


PROJECT **EXPERIENCE**

BLUEFOX
FURNITURE



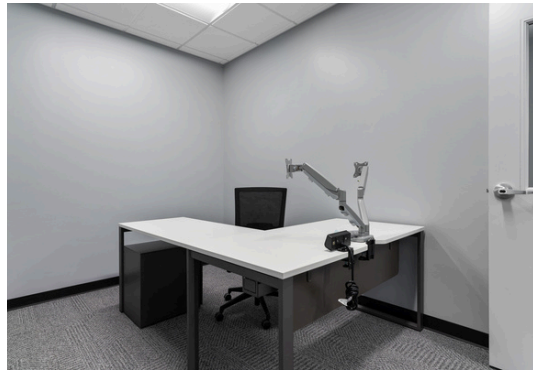
PATASKALA, OH

ILLUMINATE U.S.A. OFFICE

75,000 SFT

The office design maximizes seat capacity in both breakroom and office areas, offering a high density of seating in a compact footprint. The breakroom features a variety of seating options for comfort, while workspaces include different workspace types—cubicles, open workstations, and private offices—tailored to team needs. Training tables with flexible configurations and lounge seating in designated break areas add versatility and distinct zones throughout the office.





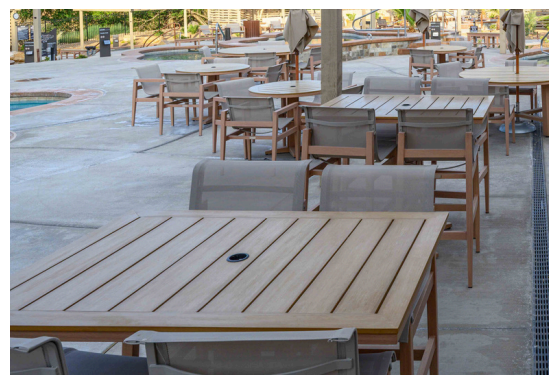
PATASKALA, OH

ILLUMINATE U.S.A. WAREHOUSE

45,000 SFT

The warehouse design maximizes efficiency with color-coded breakrooms and offices for easy wayfinding in a large facility. Simple, durable materials were selected to align with the functional needs of a manufacturing space. The breakroom offers flexible seating options, including bar-height and dining-height tables, to accommodate different preferences, while the dense layout efficiently serves a high volume of users. Lockers and cubbies were provided for personal employee storage.





LA VERKIN, UT

ZION CANYON HOT SPRINGS

65,000 SFT

This premiere spa and wellness destination sits just outside Zion National Park. While there, guests can enjoy a combination of mineral pools, cold plunges, and saunas and then relax on all the handpicked outdoor furniture with a neutral color palette that blends seamlessly with the picturesque mountain backdrop. BlueFox designed and procured everything from the towel hooks to the outdoor benches, tables, loungers, teak framed chairs, and bar stools to the umbrellas.



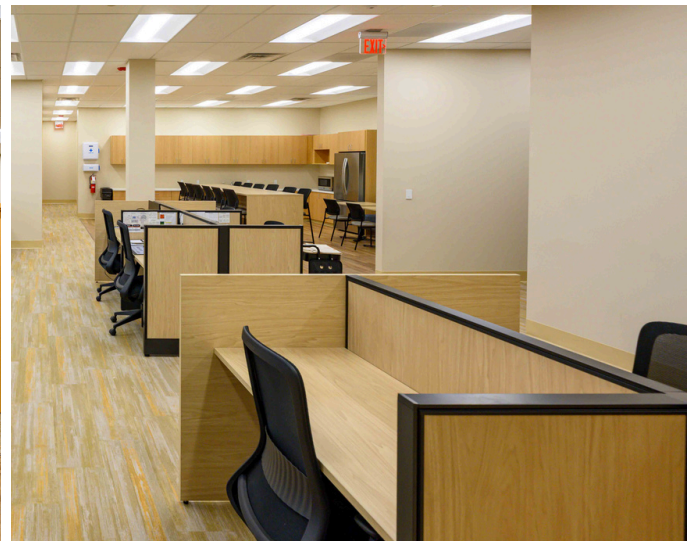
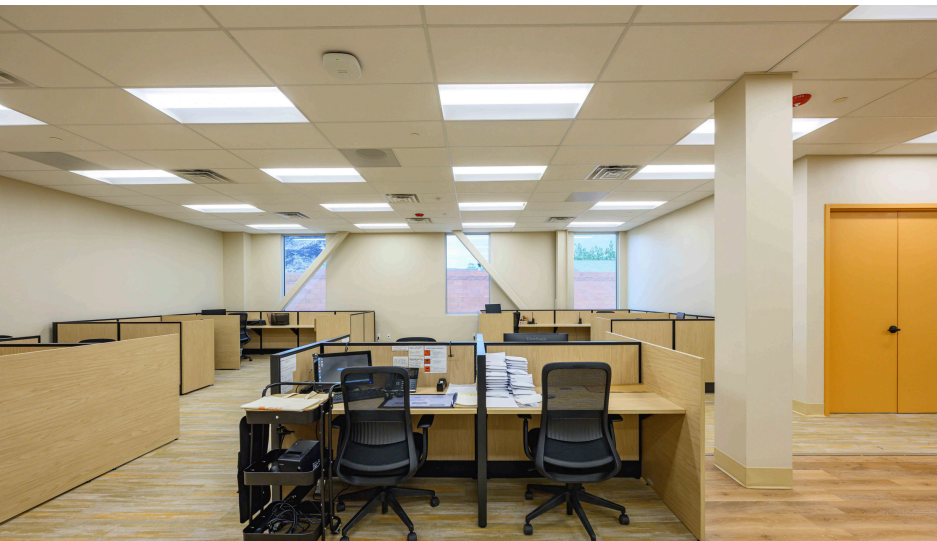


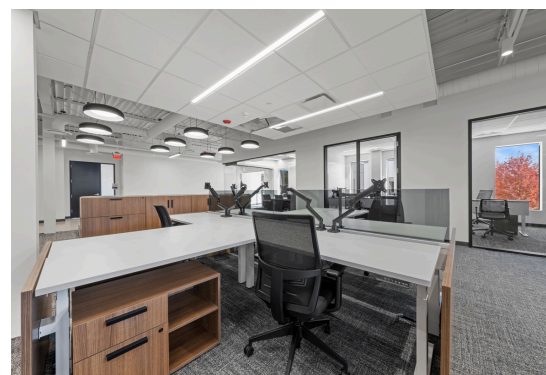
LA VERKIN, UT

ZION CANYON HOT SPRINGS

65,000 SFT

The Zion Hot Springs office space brings the spa's calming, nature-inspired aesthetic indoors. Designed to support daily operations, the space balances productivity with relaxation to create a tranquil place for the team to work. From the break room to the open office and conference room, every detail was thoughtfully considered, with budget-friendly, USA-made furniture that reflects the character of the property.





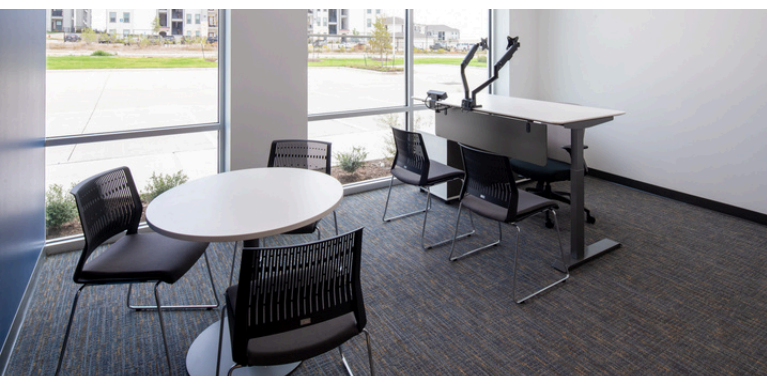
DOWNERS GROVE, IL

CORPORATE HEADQUARTERS

64,500 SFT

This corporate headquarters seamlessly blends modern design with durability and collaboration across office, outdoor, hospitality, and training spaces. Inside, conference rooms serve as statement pieces, complemented by acoustic baffles for enhanced sound control. The thoughtfully furnished layout includes a break room, client showroom, training and huddle rooms, locker room, gym, and game play spaces. Outdoors, a patio with pergolas extends the workspace, creating a seamless connection between indoors and out. Every element is carefully designed to support productivity while maintaining a polished, cohesive look.





MANOR, TX

5,000 SFT

TRANSPAK

This industrial warehouse design emphasizes a budget-friendly approach without compromising on durability or style. Key areas, including the break room, private offices, and warehouse office, feature modern, functional furniture selections. The layout includes height-adjustable desks and cubicles that support both flexibility and durability, creating a workspace tailored to meet practical needs.





CHICAGO, IL

500 W. MONROE

30,000 SFT

The office renovation primarily focused on incorporating collaboration spaces into the existing furniture layout. By blending the current building finishes and furniture with new soft seating and touchdown areas, the space now has a more contemporary feel. A neutral color palette was chosen to ensure the furniture can be used by the tenant in both this space and future ones.





NASHVILLE, TN

1005 17TH AVENUE

10,000 SFT

The office space comprises height-adjustable workstations and private office layouts. It features internal huddle rooms and sophisticated client-facing conference rooms, offering a variety of meeting spaces. Lounge seating creates a welcoming reception area. Workstation accessories, such as monitor arms, clamp-on power units, and wire management, were included.





CHICAGO, IL

311 W. HURON

15,000 SFT

The office renovation comprises four-packs of high-adjustable workstations, two distinct private office layouts, huddle rooms, meeting spaces, and a boardroom for client-facing presentations. Additionally, there's a versatile 1,300 SFT breakroom featuring both bar-height and dining-height seating, accompanied by multiple areas throughout the office for relaxed seating and collaborative work. These areas include a welcome lobby, a designated guest gathering space, and an internal lounge.





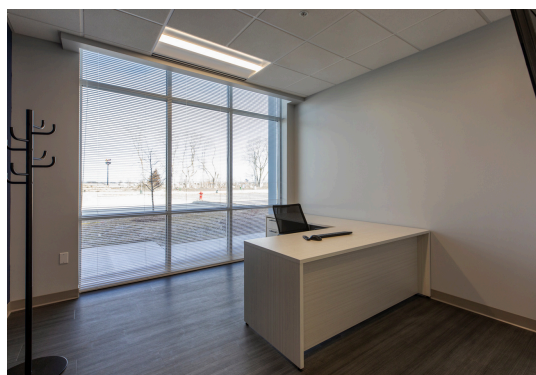
YORKVILLE, IL

CONFIDENTIAL CLIENT

8,000 SFT

Designed for durability and functionality, this industrial office seamlessly integrates open workstations with height-adjustable desks to encourage team collaboration. The break room to the training center flows cohesively, with brand-colored furniture that reinforces company identity throughout the space.





MORRIS, IL

GENERAL ELECTRIC

11,500 SFT

This corporate office in an industrial warehouse delivers an open, functional, and durable environment designed with budget-friendly, USA-made furniture and short lead times in mind. Key areas like the break room, executive and private offices, warehouse office, and open office space were thoughtfully furnished to support day-to-day efficiency. Highlighted pieces include modern cubicles, lounge areas, private office setups, and conference rooms, all contributing to an efficient and long-lasting workspace.



GET IN TOUCH

info@bluefoxfurniture.com

(331) 625 - 3417

